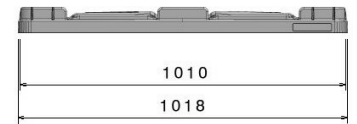
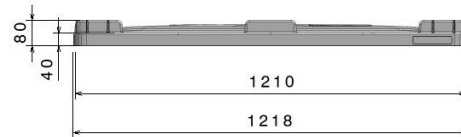




Lid for SB3 pallet box

1200 x 1000 mm



Art. no. 80410800

Technical data

External Dimensions L x W x H (mm)	1218 x 1018 x 80
Internal Dimensions L x W x H (mm)	1210 x 1010
Weight (kg)	6.5
Material	PE
Nesting Height (mm)	40

Characteristics

Colour: light grey
 Stackable
 Temperature stability: -30 °C to +40 °C, briefly up to +90 °C

Options

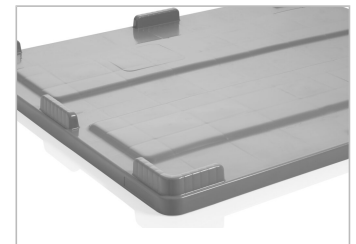
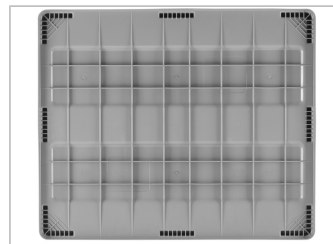
-

Loading quantities (Pcs / Approximate amount)

On request

Labelling

Hot stamping of letters and logos on request, depending on quantity. Position on long side.



*1 All technical data include characteristic features, which have been tested under specially defined conditions. Varying data may result from different conditions of usage such as loading method, prevailing temperature and length of storage time. All data and specified information are subject to change without notice. Our service team is pleased to be at your disposal to check the special requirements of your individual application.

*2 Our service team is pleased to be at your disposal if you require exact information about material compositions.