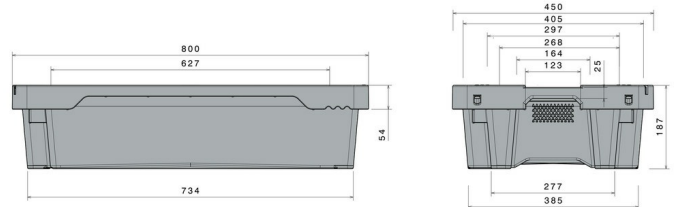


Stack & Nest Box / Fish Box

20 kg / 35 l



Art. no. 81671010

Technical data

External Dimensions L x W x H (mm)	800 x 450 x 190
Internal Dimensions L x W x H (mm)	645 x 400 x 180
Weight (kg)	2.6
Volume (l)	35 l
Material	PE

Load capacity (kg)  **Holding Capacity**
20 kg

 **Extra Load**
295

Stacking height (mm)  **When nested**
55

 **When stacked**
157

Characteristics

Colour: white
Nestable, stackable
With base perforation
Craemer drainage system
For temperatures ranging from -30 °C to +40 °C, briefly up to +90 °C
Resistant to most chemicals and cleaning agents
Food-safe. HACCP compliant

Options

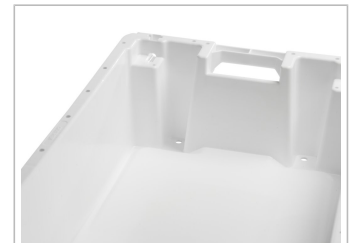
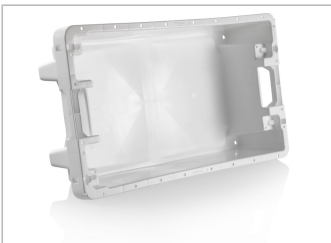
Without base perforation
Transponder (RFID)

Loading quantities (Pcs / Approximate amount)

On request

Labelling

Customised printing and numbering available on request depending on quantity. Position upon consultation.



*1 All technical data include characteristic features, which have been tested under specially defined conditions. Varying data may result from different conditions of usage such as loading method, prevailing temperature and length of storage time. All data and specified information are subject to change without notice. Our service team is pleased to be at your disposal to check the special requirements of your individual application.